

EPS Beads Making Machine

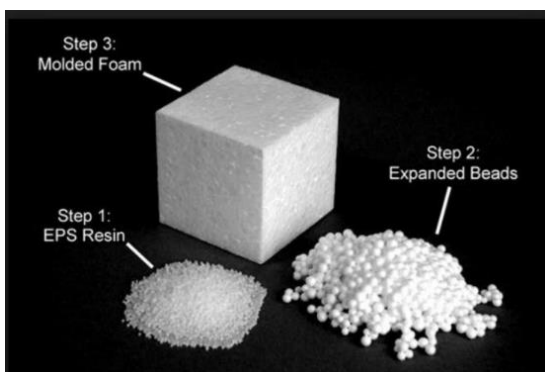


EPS auto batch pre-expander, EPS beads making machine is functioned to expand EPS raw material to the required density. Material filling and expanding are done batch by batch, so it's called Batch pre-expander. EPS auto batch pre-expander EPS beads making machine is a complete automatic EPS machine. All steps work automatically like EPS material filling, weighing, material conveying, steaming, stabilizing, discharging, drying, and expanded material conveying.

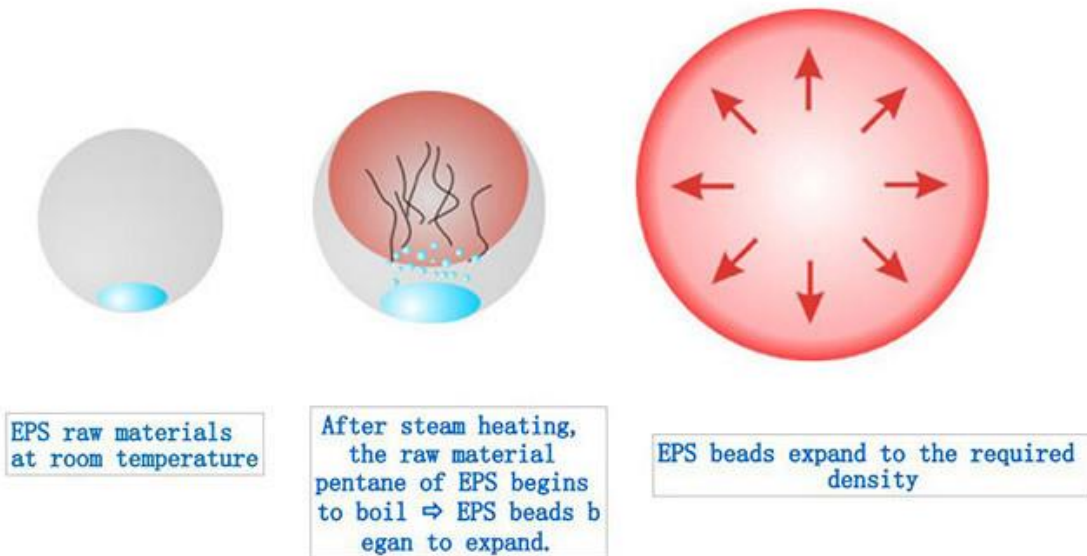
Inside EPS raw beads, there's the blowing gas called pentane. After steaming, pentane starts to expand, so the bead size also grows bigger. This is called expanding. EPS raw beads cannot be used to make blocks or packaging products directly, and all beads need to be expanded first, then made other products. Product density is decided during Pre-expanding, so density control is done in Pre-expander.

Functions & Features

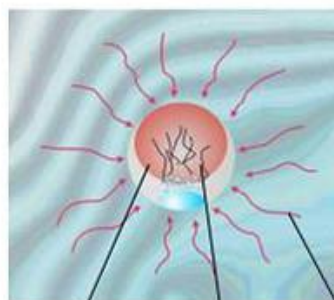
- Steam system: steam pressure reducer and angle valve to control steam
- Filling system: adopts electronic weighing system and material filling automatically
- Material level control: adopts photo sensor to control the expansion level
- Electric control: adopts PLC controller and touch screen to keep process working automatically



EPS production technology - pre foaming



Heat transfer



EPSResin Pentane Wet steam

*Heat softened polystyrene

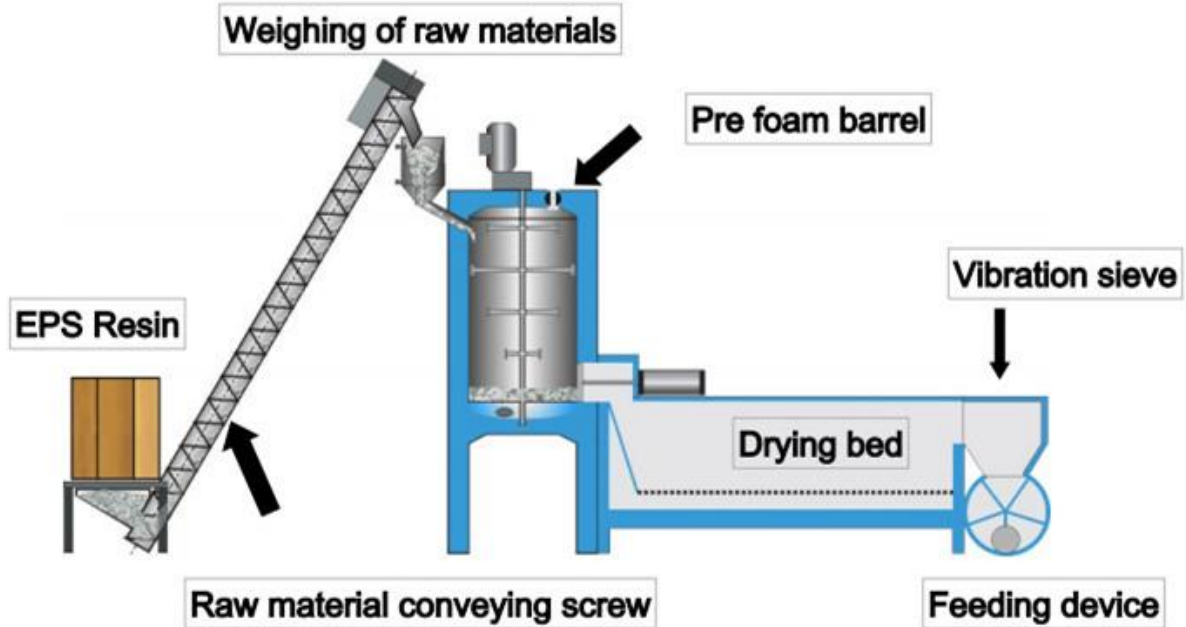
*The pentane stored in EPS beads begins to boil and vaporize

*The vaporized pentane gas increases the pressure in the EPS beads, causing them to expand

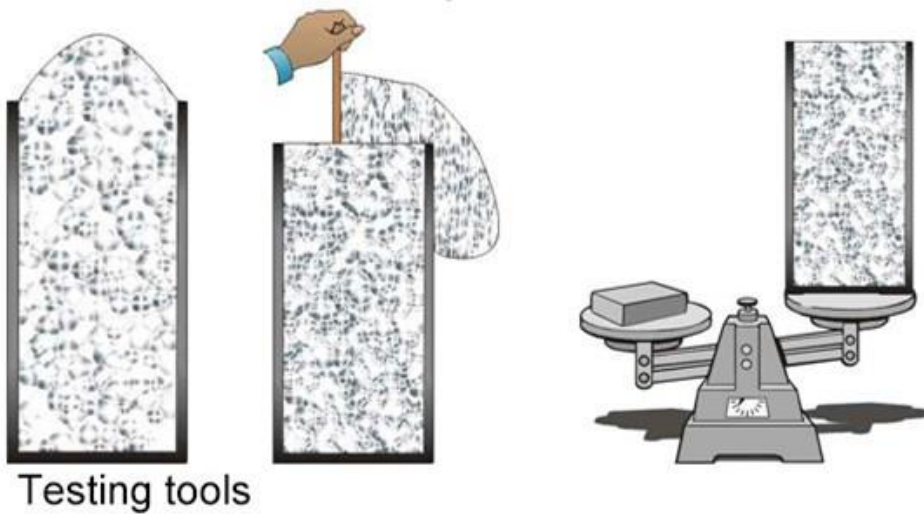
PREHEATING

Open the cleaning door to remove the impurities in the cylinder, check whether the movable mixing rod is firm, and then close the cleaning door. Close the three valves on the control panel and close the feed gate. Start the mixing and feeding motor, and the mixing rod and feeding screw are idly running. At this time, open the steam valve to raise the temperature in the foaming cylinder to 70 ~ 75 ° C and keep it for 3 ~ 5 minutes.

Batch Pre-Expander



Density detection



Testing tools

- balance, bucket ($\geq 1L$), scraper

TEST METHOD

- Sampling location and time
- Outlet of fluidized bed and curing silo
- Density changes before and after ripening

Technical Data

Item		Type							
		ESPB-50		ESPB-110		ESPB-150		ESPB-160	
Expansion Container	Diameter	∅500mm		∅1100mm		∅1500mm		∅1600mm	
	Volume	0.14m ³		1.4m ³		4.5m ³		5.4m ³	
	Useable Volume	0.1 m ³		0.9m ³		3.2 m ³		4.5 m ³	
Steam	Entry	DN25		DN50		DN50		DN100	
	Consumption	0.5-0.7kg / cycle		8-11kg / cycle		15-18kg / cycle		18-20kg / cycle	
	Pressure	0.6-0.8MPa		0.6-0.8MPa		0.6-0.8MPa		0.6-0.8MPa	
Compressed Air	Entry	DN20		DN25		DN40		DN40	
	Consumption	0.2-0.3m ³ / cycle		0.5-0.6m ³ / cycle		0.5-0.6 m ³ / cycle		0.5-0.8 m ³ / cycle	
	Pressure	0.6-0.8MPa		0.6-0.8MPa		0.6-0.8MPa		0.6-0.8MPa	
Drainage	Drainage Port Condensate	DN80		DN80		DN100		DN150	
		DN20		DN80		DN40		DN50	
Productive Capacity		12 g / l	70kg / h	12g / l	240kg / h	12g / l	600kg / h	12g / l	1400kg / h
		18 g / l	100kg / h	15g / l	320kg / h	15g / l	900kg / h	15g / l	1800kg / h
		25 g / l	110kg / h	20g / l	430kg / h	20g / l	1200kg / h	18g / l	2300kg / h
		32g / l	130kg / h	30g / l	600kg / h	30g / l	1500kg / h	25g / l	2800kg / h
								Second expansion	
								8g / l	800kg / h
							10 g / l	1000kg / h	
Material Conveying Line		∅150mm		∅150mm		∅250mm		∅250mm	
Power		9.5KW		16.1 KW		24.85KW		3.5KW	
Density		12-140g / l		12-30g / l		12-30g / l		12-30g / l	
Density Tolerance		≤±2%		≤±2%		≤±3%		≤±3%	
Overall Dimension	(L×W×H)	3000×3800×3800(mm)		5600×3000×4530(mm)		6500×4150×5400(mm)		7600×3700×4200(mm)	
Weight		1500kg		3500kg		5000kg		6300kg	
Room Height Required		5000mm		5000mm		5500mm		7000mm	

Product Features

1. Five safety protection devices with a safety maintenance;
2. Adopts touch screen and plc control with easy operation;
3. The barrel material of the pre-expander is 304 stainless steel;
4. High-density rock wool is used as a thermal insulation layer, which can effectively reduce the temperature change;
5. Japanese reducing valve to control the steam pressure and make it stable and uniform;
6. Accurate weighing sensor to ensure the density difference between each batch;
7. The constant temperature and pressure guarantee foaming error within 3%;
8. The secondary foaming system to produce EPS products with lower density;
9. The fluidized bed is equipped with a particular drying system to reduce the ageing time of beads in the silo;
10. Branded low voltage electrical components.