



Safety and Quality are Elements of **Victorious Sight**



PRODUCT CATALOG

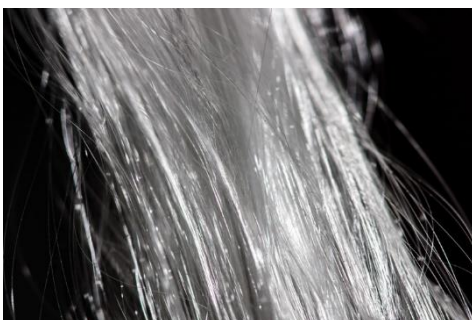
Fiberglass Gypsum Roving



TYPICAL PROPERTIES

TYPE OF GLASS	E
LINEAR DENSITY	2400/4800TEX
FILAMENT DIAMETER	13~17 μ m
FILAMENT TENSILE	≥ 0.3 N/TEX
MOISTURE	$\leq 0.2\%$
LOI (%)	0.95~1.30%
MOI (%)	$\leq 0.10\%$

DESCRIPTION



The fiberglass roving is specifically designed to reinforce for gypsum related products, such as board, plate, decorative materials and sculptures, etc. It can be chopped into a specific length and the chop is mixed with gypsum, starch powder, and accelerating agent. Then the mixture is molded, cured, cut and dried to form light weight construction boards.

Fiberglass is cheaper and more flexible than carbon fiber, it is stronger than many metals by weight, is non-magnetic, non-conductive, transparent to electromagnetic radiation, can be molded into complex shapes, and is chemically inert under many circumstances. The diameter of the filaments, and the number of filaments in the roving, determine its weight, typically expressed in tex measurement systems. TEX, or grams per km, how many grams 1 km of roving weighs, inverted from yield; thus a smaller number means a lighter roving .

Fiberglass Gypsum Roving

FEATURES

- High strength, fire-resistant, soundproof and lightweight.
- Good choppability, easy dispersion and no static.
- Good abrasion resistance.
- Low fuzz during the manufacturing process.
- Perfect hardness and good beaming.
- Products process excellent mechanical properties.

PACKING & STORAGE

Packing: 20KGS/roll

Unless otherwise specified, the fiberglass products should be stored in a dry, cool and moisture-proof area. The room temperature and humidity should always be maintained at 15°C~35°C and 35% ~ 65%. It is best if the product is used within 12 months after production date.

APPLICATIONS



● Gypsum Board



● Plaster Block



● Ceiling Tiles



● Sculpture



● Plaster Cornice



● Ceiling Medallion




● Gypsum Pillar





● Gypsum Wall Panel


WUHAN VISIGHT INTERNATIONAL TRADE CO., LTD

 www.vi-sight.com

 86-27-86951753

 86-27-86951753

 info@vi-sight.com

 Wuhan City, Hubei Prov., China